

It is critical that all Fire Protection materials are installed professionally and to exact specifications to deliver their vital protection in-use. FIREFLY™ are long-standing providers of training and we are expanding course options to ensure relevant, tailored and accessible programmes are available to all.

Training is designed to be both theoretical and hands-on, as well as being flexible to cover specialist areas, project specific requirements and assessment needs. Small numbers of participants also allows content to be bespoke to the skill levels of those attending.

Our overarching mission is to ensure all FIREFLY™ products are expertly installed by well-trained installers to provide protection, compliance and peace-of-mind to all involved in a project.

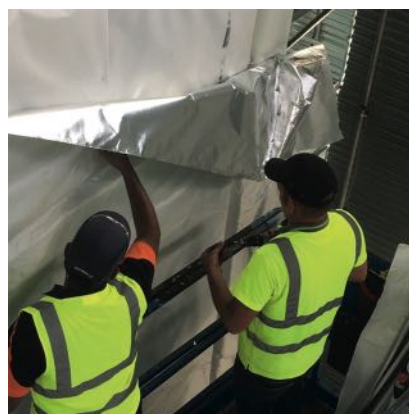
FIREFLY™ General Assembly Installation Course

Our most popular course, delivered at our Training facilities in either Rochdale or Northampton. Hands-on and practical, covering all key aspects of installing, fixing and jointing FIREFLY™ barriers and safely managing penetrations.
(see over for details)



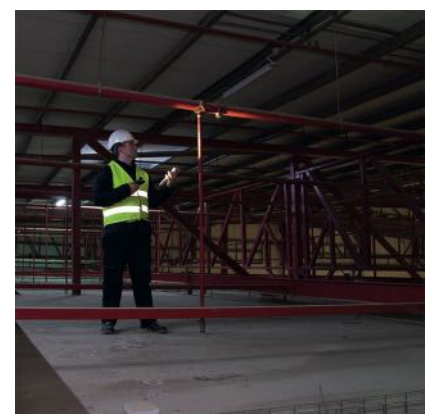
FIREFLY™ Onsite Training

Where desirable or more practical, we are able to bring our FIREFLY™ training course direct to site. Obviously we will need certain site facilities and areas allocated and propped for training, but if onsite training may suit your business better, please get in touch.



FIREFLY™ Assessors Training

A new area developed to meet demand from our customers. How can you safely assess an installation if you don't know exactly how the products should be installed? This course sets out to address this, again with a mix of theory and practice.



FIREFLY™ training is designed to be delivered to groups of 4-6 people and is chargeable to ensure we can provide the appropriate level of trainer, facilities, material and bespoke content.

Online Resources

Our installer and assessor training is based directly on the clear installation instructions on the FIREFLY™ website, where you can find Product Data Sheets, CAD Installation Detailing and Installation Manuals for each product – in addition to our full independent certification and product safety sheets. Find it all at www.tbafirefly.com

FIREFLY™ General Assembly Installation Content

Our installer training covers the theory and requirements of Passive Fire Protection and Building Regulations, as well as the practical, hands-on training on how to install our barriers and ancillary products to the highest standards in all scenarios.

Training covers –

- Top fix methods
- Side fixing
- Vertical joints
- Penetration management
- Horizontal joints
- Seaming
- Bottom fix methods

Practicalities

- Training takes place either at FIREFLY™ Head Office in Rochdale or at our dedicated training facility in Raunds, Northamptonshire
- Up to six delegates can be accommodated in any one session with at least one senior member of staff in attendance
- Vertical and Horizontal Training – £750 per day up to a maximum of 6 delegates
- Full PPE is required (to include gloves and goggles) *Training cannot go ahead without PPE*

Benefits

- Individual ID card and certificate issued on completion of training to demonstrate competence in the correct installation of FIREFLY™ products
- Installation training is a critical step towards inclusion on the FIREFLY™ Preferred Installer List – frequently referred to by specifiers and end-users
- Most importantly, our installer training allows you to demonstrate to YOUR customers that you are competent in the installation of FIREFLY™ products and take the training of staff, safety of installation and compliance with all requirements SERIOUSLY



To find out more about any of the training courses available, please register your interest via the FIREFLY™ website www.tbafirefly.com/training, or alternatively email training@tbafirefly.com and we will get back to you.

FIREFLY™ – COMMITTED TO RAISING STANDARDS THROUGH INVESTMENT IN TRAINING