

7

6

5

4

3

2

1

41 x 41 mm UNISTRUT CHANNEL.

UNISTRUT WRAPPED IN FIREFLY™ BARRIER.

ALLOW APPROX 6mm EXTRA GAP TO ALLOW FOR BATT AND MASTIC.

DO NOT SCALE. IF IN DOUBT ASK!

FIREFLY™ FB 180 INTUMESCENT BATT, CUT TO SIZE BEFORE BEING BUTTERED WITH INTUMESCENT ACRYLIC MASTIC AND FRICTION FIT INTO THE FRAMEWORK.

TOP FIX (A-002).

FIREFLY™ APOLLO LITE™ BARRIER.

FIREFLY™ FB 180 BATT.

BATT PAINTED WITH BRUSH GRADE INTUMESCENT MASTIC AFTER INSTALL.

TOP FIX (A-002).

WRAPPED UNISTRUT FRAMEWORK.

FIREFLY™ FB 180 BATT.

FIREFLY™ APOLLO LITE™ BARRIER.

THE FRAMEWORK IS INSTALLED AND WRAPPED FIRST.

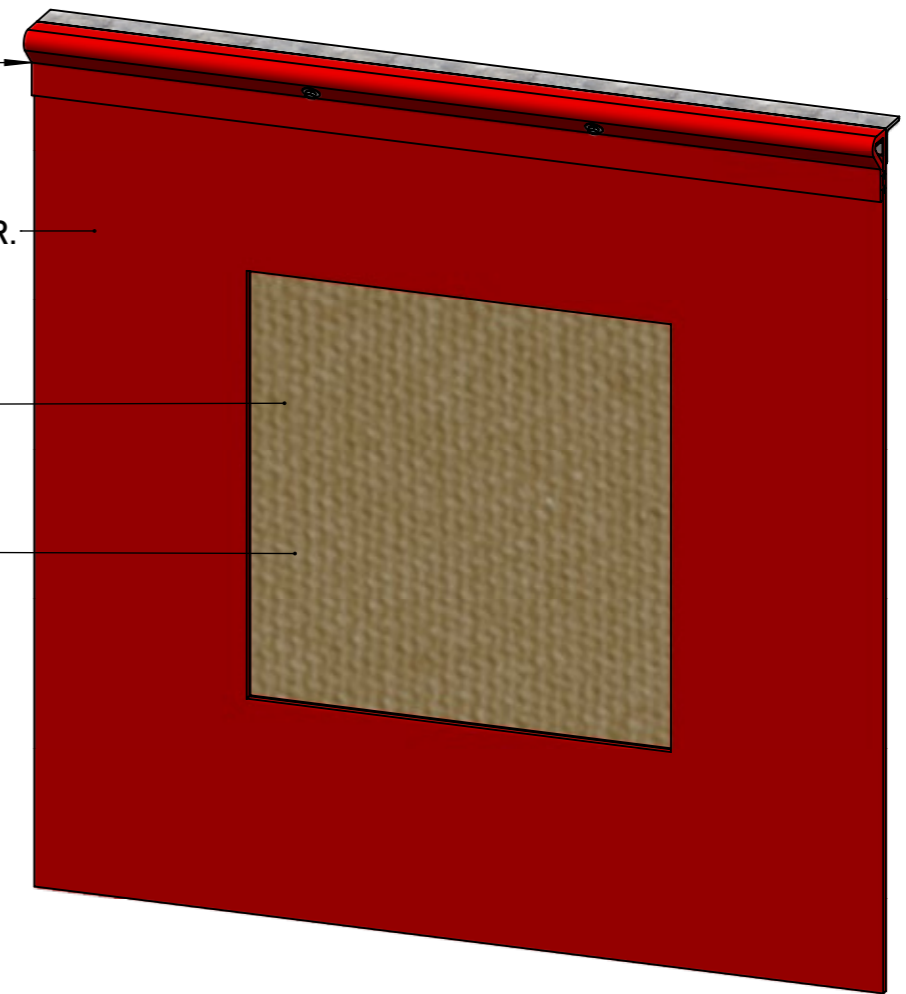
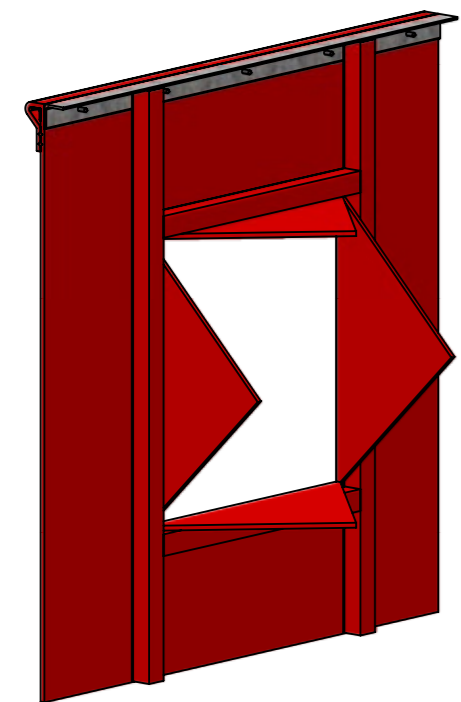
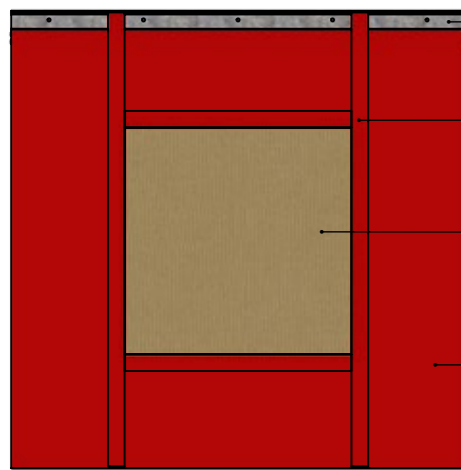
THE TOP FIX AND VERTICAL BARRIER IS INSTALLED SECOND.

CUT THE BARRIER AS REQUIRED TO ACCOMMODATE THE PENETRATION.

THE EXCESS BARRIER FROM THE CUT CAN BE WRAPPED AROUND THE FRAMEWORK.

THE BATT SHOULD BE BUTTERED WITH ACRYLIC INTUMESCENT MASTIC BEFORE BEING FRICTION FITTED INTO THE FRAMEWORK.

FINALLY THE BATT IS PAINTED WITH BRUSH GRADE INTUMESCENT MASTIC AFTER INSTALL.



### APOLLO LITE™ - BATT INTO FRAMEWORK

TBA PROTECTIVE TECHNOLOGIES LTD

UNIT 3, Transpennine Trading Estate, Gorrells Way  
Rochdale, OL11 2PX, United Kingdom

T: +44 (0)1706 758 817  
E: Technical@TBAFIREFLY.com  
W: www.tbafirefly.com

ARTIST: JC

APPROVED: DA

DATE: 07/12/2022

SCALE: NTS

DRAWING NO:

A - 407

REVISION: 1

IN SEQUENCE: 1/1

ALL RIGHTS RESERVED. NO PARTS OF THIS DRAWING MAY BE USED REPRODUCED, ALTERED, STORED IN A RETRIEVAL SYSTEM OR TRANSMITTED IN ANY FORM OR BY ANY MEANS WITHOUT THE PRIOR WRITTEN PERMISSION OF TBA PROTECTIVE TECHNOLOGIES LTD. WHILST EVERY EFFORT HAS BEEN MADE TO COMPLY WITH THE CURRENT STATUTORY REGULATIONS, IT IS THE USER'S RESPONSIBILITY TO ENSURE THAT THE FINAL DETAILING AND INSTALLATION MEETS THE REQUIREMENTS OF RELEVANT REGULATORY AUTHORITY (OFTEN BUILDING CONTROL). PLEASE CHECK [www.tbafirefly.com](http://www.tbafirefly.com) TO ENSURE THAT YOU ARE USING THE CORRECT AND CURRENT VERSION. COPYRIGHT 2022

