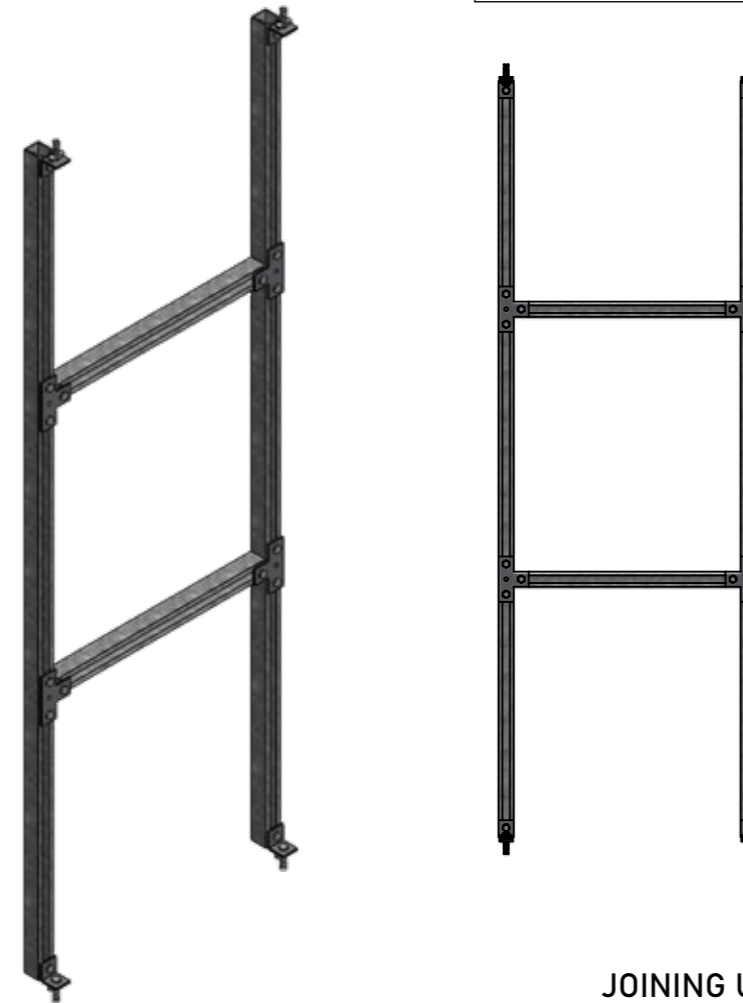
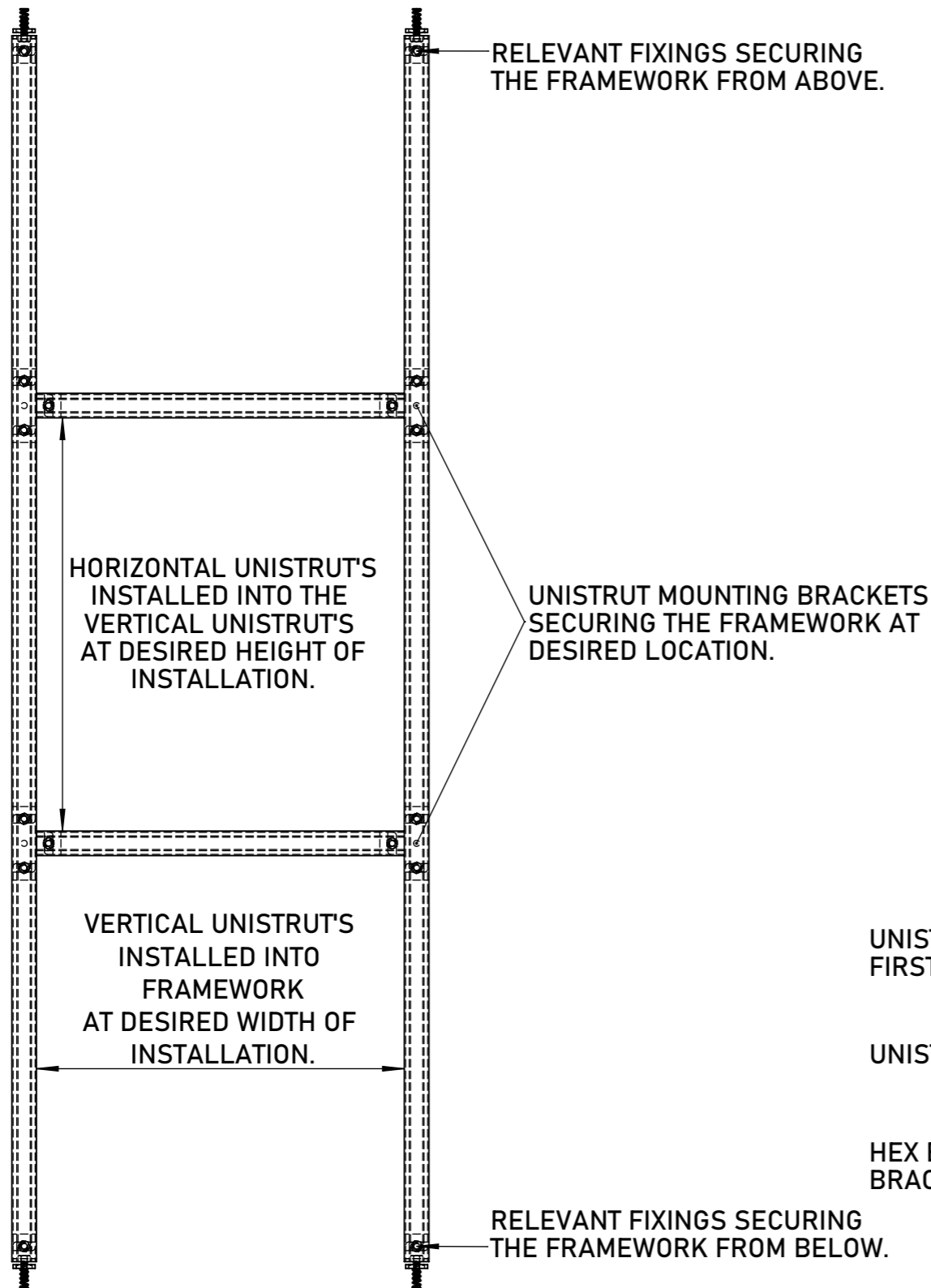


DO NOT SCALE. IF IN DOUBT ASK!

THERE IS A WIDE VARIETY OF FIXING AND INSTALLATION METHODS AVAILABLE FOR THE UNISTRUT SYSTEM. THESE INSTRUCTIONS ARE INTENDED FOR FRAMEWORK AND SUPPORT OF THE FIREFLY™ BARRIER SYSTEM ONLY.

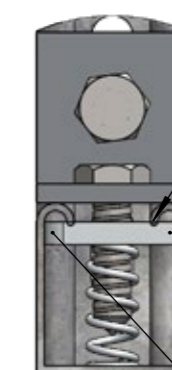
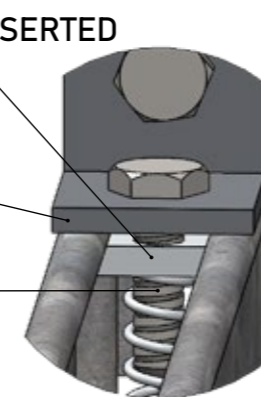


JOINING UNISTRUT'S

UNISTRUT CHANNEL NUT WITH SPRING INSERTED FIRST AND ROTATED TO LOCK POSITION.

UNISTRUT MOUNTING BRACKET.

HEX BOLT SECURING THE MOUNTING BRACKET TO THE NUT.



THE LIP OF THE UNISTRUT SLOTS INTO THE GROOVE OF THE NUT ANCHORING IT IN PLACE.

LOCKING THE NUT WILL STABILIZE THE FIXING AND STRENGTHENS THE STRUCTURAL INTEGRITY OF THE UNISTRUT.

CURVED EDGE ALLOWS FOR EASIER ROTATION.

THERE ARE A LARGE AMOUNT OF OPTIONS FOR FIXINGS AND SECURING UNISTRUT INCLUDING WELDING AND CONCRETE INSERTS. THESE RECOMMENDATION ARE THE MINIMUM AND DESIGNED TO BE COST EFFECTIVE, ADJUSTABLE AND EASY TO INSTALL. FOR BESPOKE PROJECTS PLEASE CONTACT OUR TECHNICAL TEAM FOR ADVICE.

TITAN LITE™ - FRAMEWORK FOR FITTING INTO

TBA PROTECTIVE TECHNOLOGIES LTD

ARTIST: JC

DRAWING NO:

UNIT 3, Transpennine Trading Estate, Gorrells Way  
Rochdale, OL11 2PX, United Kingdom

APPROVED: DA

T - 401

T: +44 (0)1706 758 817  
E: Technical@TBAFIREFLY.com  
W: www.tbafirefly.com

DATE: 07/12/2022

REVISION: 1

SCALE: NTS

IN SEQUENCE: 1/1

ALL RIGHTS RESERVED. NO PARTS OF THIS DRAWING MAY BE USED REPRODUCED, ALTERED, STORED IN A RETRIEVAL SYSTEM OR TRANSMITTED IN ANY FORM OR BY ANY MEANS WITHOUT THE PRIOR WRITTEN PERMISSION OF TBA PROTECTIVE TECHNOLOGIES LTD. WHILST EVERY EFFORT HAS BEEN MADE TO COMPLY WITH THE CURRENT STATUTORY REGULATIONS, IT IS THE USER'S RESPONSIBILITY TO ENSURE THAT THE FINAL DETAILING AND INSTALLATION MEETS THE REQUIREMENTS OF RELEVANT REGULATORY AUTHORITY (OFTEN BUILDING CONTROL). PLEASE CHECK [www.tbafirefly.com](http://www.tbafirefly.com) TO ENSURE THAT YOU ARE USING THE CORRECT AND CURRENT VERSION. COPYRIGHT 2022

